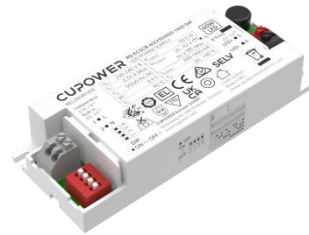


Product features

- Isolated adjustable power LED driver
- Current adjustment via DIP Switch
- Output current 800mA, 850mA, 900mA, 950mA, 1000mA, 1050mA, 1100mA, 1150mA, 1200mA, 1250mA, 1300mA, 1350mA, 1400mA
- Max. output power 58.8 W
- DC emergency
- Current output default value 100%
- For luminaries of protection class I, II
- 5-year warranty



Product specifications

163045 RD ECSCB 60/230/800-1400 DIP

Output current	Input voltage	Output voltage	Efficiency @full load	Current accuracy	Power factor	Dimension LxWxH (mm)
800...1400 mA	220...240 Vac 220...240 Vdc	25...42 Vdc	92%	± 5%	0.9 C	109 x 43 x 21

Electrical specifications

Mains voltage supply

Rated input voltage range	220...240 Vac
Max. input voltage range	198...264 Vac
Rated frequency range	0/50/60 Hz
Max. input current	0.33 A @ 230 Vac

Battery operation

DC voltage range	220...240 Vdc
Max. DC voltage range	176...276 Vdc

Protection against voltage peaks

Withstand voltage	l/p-O/p: 3 kVac, < 5 mA 60 sec
Mains surge immunity	L-N 1 kV

Total harmonic distortion (THD)

At rated input voltage range @ full load	≤ 10%
--	-------

Output data

Output current tolerance	± 5% at rated input voltage range
--------------------------	-----------------------------------

No load output voltage	≤ 55 Vdc
Ripple output current	5% (ripple = peak/average total 100 Hz)
Output PstLM	≤ 1 at full load @ rated input voltage
Output SVM	≤ 0.4 at full load @ rated input voltage

Protection functions output side

Overvoltage protection	The output voltage is less than or equal to 55 V
Overpower protection	-

Dimming operation and interface

Standby power consumption	-
---------------------------	---

Connection terminals

Connection terminal type	45° Push in terminal
Wire cross section	Input wire: 0.5...1.5 mm ² @ Built-in, 0.75...1.5 mm ² @ Independent Output wire: 0.2...1.5 mm ²
Wire stripping length	8...9 mm

Degree of protection

Protection rating	IP20
-------------------	------

Operating data

Output current range	Output current 800...1400 mA by DIP Switch adjust
Default current	800 mA
Output voltage range	25...42 Vdc

Circuit breaker / Inrush current

MCB loading quantity	Inrush current I _{peak} : 26.1 A			Inrush current T _{width} : 271 μs	
	MCB type	B10	C10	B16	C16
	Units	14	24	23	39

Supplementary instructions

- The luminaire manufacturer is responsible for measuring and verifying the EMI compliance of the complete luminaire, as the level of radio interference will vary depending on the luminaire construction. Especially primary and secondary cable lengths and their routing may have a significant effect on radio interference.

Environmental specifications

Operating temperature	-20...+50°C
Storage temperature	-25...+85°C
Working humidity	10%...90%
Store humidity	5%...95%
Lifetime	at Tc 90°C: 50,000 hrs @ 230 Vac
Maximum Tc temperature	90°C

Safety & EMC compliance

ENEC+CE
EN 61347-1: 2015/A1:2021
EN 61347-2-13: 2014/A1: 2017
EN 62384: 2020
EN 55015:2019/A11: 2020
EN 61547: 2009
EN 61000-3-2:2019/A1: 2021
EN 61000-3-3:2013/A2: 2021
EN 62493:2015/A1:2022

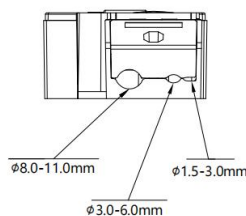
CCC
/
/
/
/
/
/
/
/

SAA
AS/ 61347.2.13: 2018
AS/NZS 61347.1: 2016+ A1 Lamp Control Gear- Part 2-13
/
/
/
/
/
/

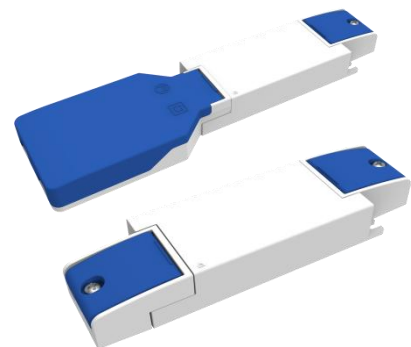
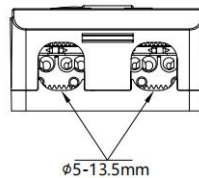
Accessories (optional)



Art. 161195 XZ-ID-C



Art. 161201 XZ-ID-LOOP-C



Dimensions

	Length (mm)	Width (mm)	Height (mm)
XZ-ID-C	39	33	21
XZ-ID-LOOP-C	105	56.5	21
Driver incl. 2 x XZ-ID-C	143	43	21
Driver incl. XZ-ID-C + XZ-ID-LOOP-C	216.8	56.5	21

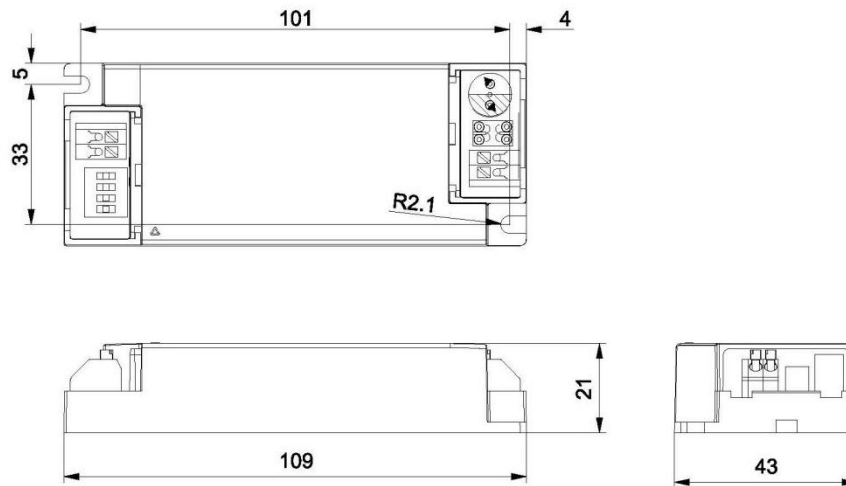
Dimensions

Housing dimensions

Length (L)	109 mm
Width (W)	43 mm
Height (H)	21 mm
Weight	0.140 kg

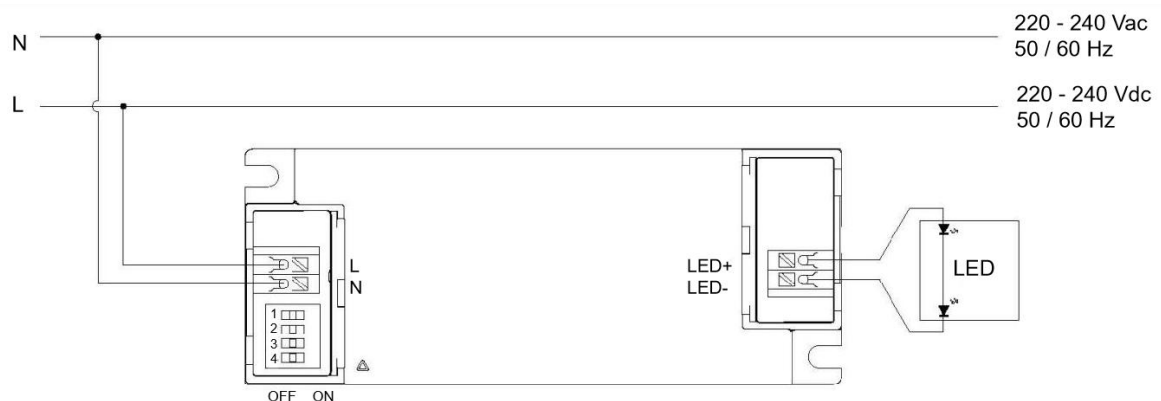
Packaging details

Packing units	60 pcs
Carton size	271 x 230 x 140 mm
Weight	9.0 kg



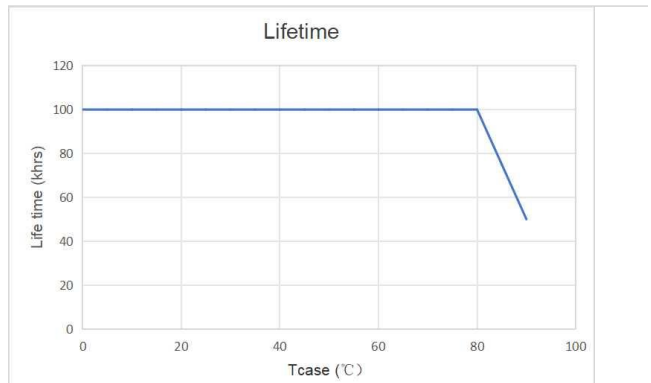
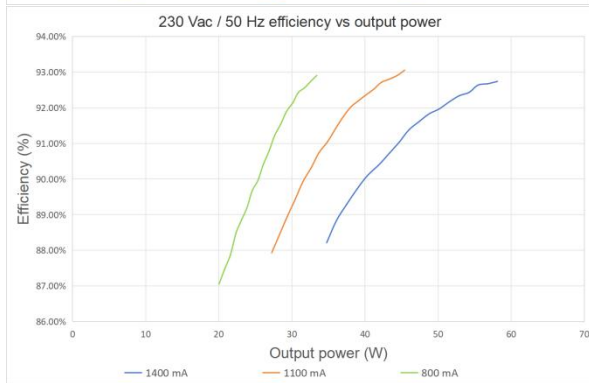
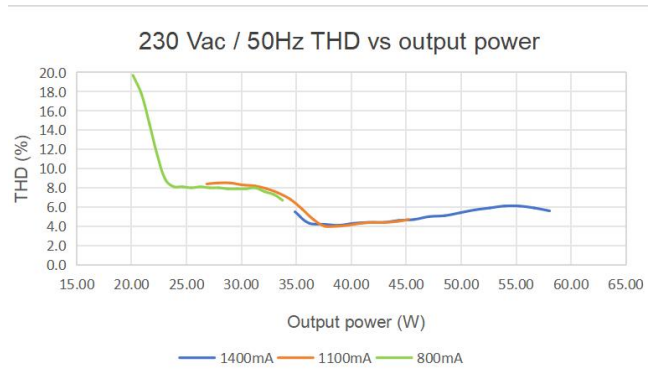
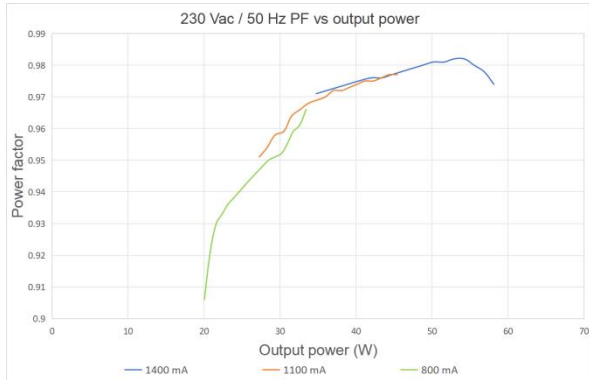
unit:mm
tol:±0.5mm

Wiring diagram



- All connections must be as short as possible to ensure good EMI performance.
- The luminaire wire should keep a certain distance from the LED power supply and other wires (5...10 cm is preferred).
- No secondary switches are allowed.
- Incorrect wiring can damage the LED.
- The wire must be well protected against short circuit.

Technical information



It's important to set the output current (AOC value) according to the LED voltage and make sure the power is within 58.8W + 5%

Adjustable output current with DIP-switch

Vout (V)	Pout (W)	Lout (mA)	1	2	3	4
25-42	33.6	800	-	-	-	-
25-42	35.7	850	-	-	-	ON
25-42	37.8	900	-	-	ON	-
25-42	39.9	950	-	-	ON	ON
25-42	42	1000	-	ON	-	-
25-42	44.1	1050	-	ON	-	ON
25-42	46.2	1100	-	ON	ON	-
25-42	48.3	1150	ON	-	-	-
25-42	50.4	1200	ON	-	-	ON
25-42	52.5	1250	ON	-	ON	ON
25-42	54.6	1300	ON	ON	-	-
25-42	56.7	1350	ON	ON	ON	-
25-42	58.8	1400	ON	ON	ON	ON